

Panorama House

Rešetari, Kastav

Panorama House

Rešetari, Kastav

The design of the facade is carried out according to the principle of modern construction, in accordance with the functional and technological requirements of the building, using high-quality and durable materials, which by their quality ensure the rational use of energy. The roof plate of the building will be flat with the possibility of installing solar energy collectors. They are intended to be opened from the Al profile with sun protection with blinds.

Oblikovanje pročelja provodi se prema načelu suvremenog građenja u skladu s funkcionalnim i tehnološkim zahtjevima građevine primjenom kvalitetnih i postojanih materijala koji po svojoj kvaliteti osiguravaju racionalno korištenje energije. Krovna ploha građevine izvesti će se ravna s mogućnošću postavljanja kolektora sunčeve energije. Predviđeni su otvori iz Al profila sa zaštitom od sunca roletama.





Functional & design characteristics of the landscape

Funkcionalne i oblikovne karakteristike krajobraza

The space of the construction plot will be arranged in the traditional way of garden arrangement, respecting the functional and design characteristics of the landscape with the use of autochthonous plant species. It is planned to horticulturally arrange the area of 410 m² of the building plot by planting tall and low greenery, which is 39% of the undeveloped part of the building plot. Fence walls and fences are made of stone, green and metal, with a maximum height of 180 m.

Prostor građevinske čestice uredit će se na tradicionalni način uređivanja okućnice, poštujući funkcionalne i oblikovne karakteristike krajobraza uz upotrebu autohtonih biljnih vrsta. Predviđeno je hortikulturno urediti površinu od 410 m² građevne čestice sadnjom visokog i niskog zelenila što je 39% neizgrađenog dijela građevinske čestice. Ogradni zidovi i ograde izrađuju se od kamena, zeleni i metala, najviše visine 180 m.















112

PANORAMA HOUSE
KASTAV
NA BRDEH

112















Ground floor plan

Tlocrt prizemlja



Apartment 1 / Stan 1

1.1	hodnik	KER. PLOČICE	11.00 m ²
1.2	kuhinja	KER. PLOČICE	5.70 m ²
1.3	dnevni boravak	KER.PL. / PARKET	26.90 m ²
1.4	soba 1	PARKET	7.70 m ²
1.5	soba 2	PARKET	13.20 m ²
1.6	kupaona	KER. PLOČICE	5.70 m ²

UKUPNO STAN 1: 70.20 m²

priladci stana 1

①	spremište 1	4.50 m ²
15 i 16	vanjska parkirališna mjesta (2 x 2.30 x 5.00 m)	23.00 m ²
OK S1	dio okućnice	143.27 m ²

UKUPNO PRIPADCI STANA 1: 170.77 m²

SVEUKUPNO STAN 1 + PRIPADCI: 240.97 m²

Apartment 2 / Stan 2

2.1	ulaz / kuhinja / d.b.	KER. PLOČICE	29.40 m ²
2.2	soba	PARKET	11.90 m ²
2.3	kupaona	KER. PLOČICE	6.70 m ²

UKUPNO STAN 2: 48.00 m²

priladci stana 2

②	spremište 2	4.80 m ²
1	vanjsko parkirališno mjesto (2.30 x 5.00 m)	11.50 m ²
OK S2	dio okućnice	38.52 m ²

UKUPNO PRIPADCI STANA 2: 54.82 m²

SVEUKUPNO STAN 2 + PRIPADCI: 102.82 m²

Apartment 3 / Stan 3

3.1	hodnik	KER. PLOČICE	6.80 m ²
3.2	kuhinja / blag. / d.b.	KER.PL. / PARKET	31.00 m ²
3.3	soba 1	PARKET	9.00 m ²
3.4	soba 2	PARKET	13.10 m ²
3.5	kupaona	KER. PLOČICE	4.90 m ²

UKUPNO: 64.80 m²

3.6 terasa

KER. PLOČICE 5.00 m²

UKUPNO STAN 3: 69.80 m²

priladci stana 3

③	spremište 3	4.80 m ²
10 i 11	vanjska parkirališna mjesta (2 x 2.30 x 5.00 m)	23.00 m ²
OK S3	dio okućnice	296.00 m ²

UKUPNO PRIPADCI STANA 3: 323.80 m²

SVEUKUPNO STAN 3 + PRIPADCI: 393.60 m²

1st floor plan

Tlocrt 1. kata



Apartment 4 / Stan 4

4.1	hodnik	KER. PLOŠĆE	11.00 m ²
4.2	kuhinja	KER. PLOŠĆE	5.90 m ²
4.3	dnevni boravak	PARKET	23.80 m ²
4.4	soba 1	PARKET	8.90 m ²
4.5	soba 2	PARKET	13.20 m ²
4.6	kupaoana	KER. PLOŠĆE	5.70 m ²
UKUPNO:			64.80 m ²

4.7	loggia	KER. PLOŠĆE	2.80 m ²
-----	--------	-------------	---------------------

UKUPNO STAN 4:	71.00 m ²
----------------	----------------------

prilagodci stana 4

⊕	spremište 4	4.00 m ²	
819	vanjsko parkirališno mjesto (2 x 2.30 x 5.00 m)	23.00 m ²	
UKUPNO PRIPADCI STANA 4:			27.00 m ²

SVEUKUPNO STAN 4 + PRIPADCI:	98.00 m ²
------------------------------	----------------------

Apartment 5 / Stan 5

5.1	kuhinja/blag./dn.bor.	KER. PLOŠĆE	29.30 m ²
5.2	soba	PARKET	11.90 m ²
5.3	kupaoana	KER. PLOŠĆE	6.70 m ²
UKUPNO STAN 5:			47.90 m ²

prilagodci stana 5

⊕	spremište 5	4.10 m ²	
2	vanjsko parkirališno mjesto (2.30 x 5.00 m)	11.80 m ²	
UKUPNO PRIPADCI STANA 5:			15.60 m ²

SVEUKUPNO STAN 5 + PRIPADCI:	63.50 m ²
------------------------------	----------------------

Apartment 6 / Stan 6

6.1	hodnik	KER. PLOŠĆE	6.80 m ²
6.2	kuhinja / blag. / d.b.	KER.PL. / PARKET	28.40 m ²
6.3	soba 1	PARKET	9.00 m ²
6.4	soba 2	PARKET	13.10 m ²
6.5	kupaoana	KER. PLOŠĆE	4.90 m ²
UKUPNO:			62.20 m ²

6.6	terasa	KER. PLOŠĆE	4.70 m ²
-----	--------	-------------	---------------------

UKUPNO STAN 6:	66.90 m ²
----------------	----------------------

prilagodci stana 6

⊕	spremište 6	3.70 m ²	
17118	vanjsko parkirališno mjesto (2 x 2.30 x 5.00 m)	23.00 m ²	
UKUPNO PRIPADCI STANA 6:			26.70 m ²

SVEUKUPNO STAN 6 + PRIPADCI:	93.60 m ²
------------------------------	----------------------

Apartment 7 / Stan 7

7.1	kuhinja	KER. PLOŠĆE	6.70 m ²
7.2	ulaz / blag. / d.b.	KER.PL. / PARKET	24.00 m ²
7.3	soba 1	PARKET	13.40 m ²
7.4	soba 2	PARKET	11.30 m ²
7.5	kupaoana	KER. PLOŠĆE	6.50 m ²
UKUPNO:			61.90 m ²

7.6	terasa	KER. PLOŠĆE	6.70 m ²
-----	--------	-------------	---------------------

UKUPNO STAN 7:	68.60 m ²
----------------	----------------------

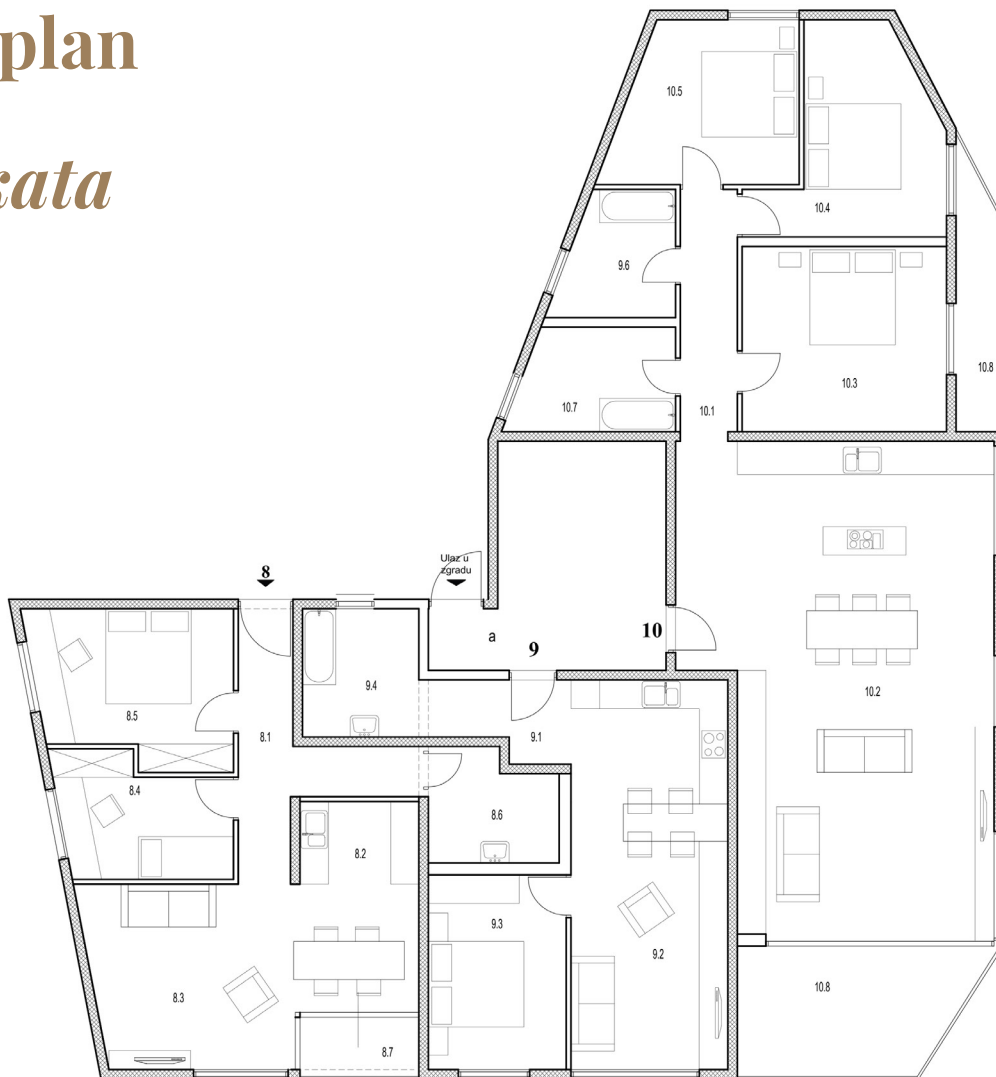
prilagodci stana 7

⊕	spremište 7	4.20 m ²	
617	vanjsko parkirališno mjesto (2 x 2.30 x 5.00 m)	23.00 m ²	
UKUPNO PRIPADCI STANA 7:			27.20 m ²

SVEUKUPNO STAN 7 + PRIPADCI:	95.80 m ²
------------------------------	----------------------

2nd floor plan

Tlocrt 2. kata



Apartment 8 / Stan 8

8.1	hodnik	KER. PLOČICE	10.50 m ²
8.2	kuhinja/blagovaona	KER. PLOČICE	10.75 m ²
8.3	dnevni boravak	PARKET	17.00 m ²
8.4	soba 1	PARKET	8.60 m ²
8.5	soba 2	PARKET	12.85 m ²
8.6	kupaona	KER. PLOČICE	6.00 m ²
UKUPNO:			65.50 m ²

8.7	loggia	KER. PLOČICE	2.60 m ²
-----	--------	--------------	---------------------

UKUPNO STAN 8:			68.10 m ²
----------------	--	--	----------------------

pripadci stana 8			
⊙	sprenište 8	4.00 m ²	
13 14	vanjsko parkirališno mjesto (2 x 2.30 x 5.00 m)	23.00 m ²	
UKUPNO PRIPADCI STANA 8:			27.00 m ²

SVEUKUPNO STAN 8 + PRIPADCI:			95.10 m ²
------------------------------	--	--	----------------------

Apartment 9 / Stan 9

9.1	hodnik / kuhinja	KER. PLOČICE	10.90 m ²
9.2	dnevni boravak	KER. PLOČICE	20.60 m ²
9.3	soba	PARKET	11.90 m ²
9.4	kupaona	KER. PLOČICE	6.30 m ²

UKUPNO STAN 9:			49.90 m ²
----------------	--	--	----------------------

pripadci stana 9			
⊙	sprenište 9	4.00 m ²	
12	vanjsko parkirališno mjesto (2.30 x 5.00 m)	11.50 m ²	
UKUPNO PRIPADCI STANA 9:			15.50 m ²

SVEUKUPNO STAN 9 + PRIPADCI:			65.40 m ²
------------------------------	--	--	----------------------

Apartment 10 / Stan 10

6.1	hodnik	KER. PLOČICE	6.80 m ²
6.2	kuhinja / blag. / d.b.	KER.PL. / PARKET	28.40 m ²
6.3	soba 1	PARKET	9.00 m ²
6.4	soba 2	PARKET	13.10 m ²
6.5	kupaona	KER. PLOČICE	4.90 m ²
UKUPNO:			62.20 m ²

6.6	terasa	KER. PLOČICE	4.70 m ²
-----	--------	--------------	---------------------

UKUPNO STAN 6:			66.90 m ²
----------------	--	--	----------------------

pripadci stana 6			
⊙	sprenište 6	3.70 m ²	
17 18	vanjsko parkirališno mjesto (2 x 2.30 x 5.00 m)	23.00 m ²	
UKUPNO PRIPADCI STANA 6:			26.70 m ²

SVEUKUPNO STAN 6 + PRIPADCI:			93.60 m ²
------------------------------	--	--	----------------------

3rd floor plan

Tlocrt 3. kata



Apartment 11 / Stan 11		
11.1	hodnik	KER. PLOČICE 16.50 m ²
11.2	kuhinja	KER. PLOČICE 18.00 m ²
11.3	dnevni boravak	PARKET 30.20 m ²
11.4	soba 1	PARKET 12.00 m ²
11.5	soba 2	PARKET 10.10 m ²
11.6	soba 3	PARKET 16.40 m ²
11.7	kupaona 1	KER. PLOČICE 5.70 m ²
11.8	kupaona 2	KER. PLOČICE 6.40 m ²
UKUPNO:		115.30 m ²
11.9	Loggia	KER. PLOČICE 8.00 m ²
UKUPNO STAN 11:		123.30 m ²
pripadci stana 11		
①	spremište 11	3.70 m ²
3.4 i 5	vanjska parkirališna mjesta (3 x 2.30 x 5.00 m)	34.50 m ²
UKUPNO PRIPADCI STANA 11:		38.20 m ²
SVEUKUPNO STAN 11 + PRIPADCI:		161.50 m ²
Apartment 12 / Stan 12		
12.1	kuhinja / blag. / d.b.	KER. PL. / PARKET 50.40 m ²
12.2	hodnik	KER. PLOČICE 11.20 m ²
12.3	soba 1	PARKET 20.70 m ²
12.4	soba 2	PARKET 14.90 m ²
12.5	soba 3	PARKET 12.70 m ²
12.6	kupaona 1	KER. PLOČICE 6.10 m ²
12.7	kupaona 2	KER. PLOČICE 7.10 m ²
12.8	ostava	KER. PLOČICE 6.40 m ²
UKUPNO:		129.50 m ²
12.9	terasa	KER. PLOČICE 9.40 m ²
UKUPNO STAN 12:		138.90 m ²
pripadci stana 12		
②	spremište 10	3.70 m ²
22,23 i 24	vanjska parkirališna mjesta (3 x 2.30 x 5.00 m)	34.50 m ²
UKUPNO PRIPADCI STANA 12:		38.20 m ²
SVEUKUPNO STAN 12 + PRIPADCI:		177.10 m ²

Situacija

Situation



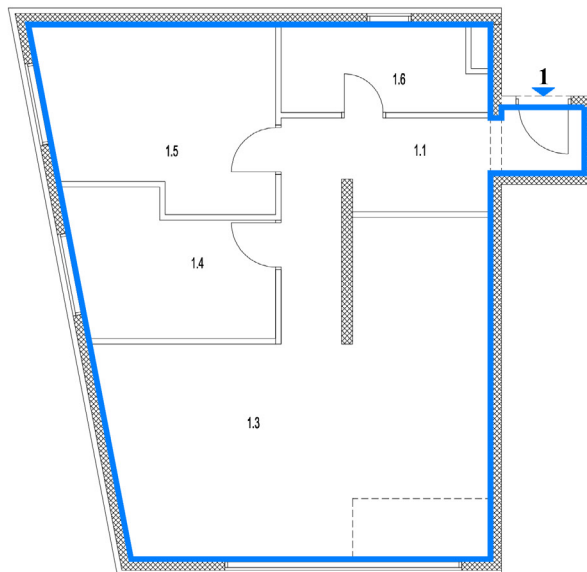
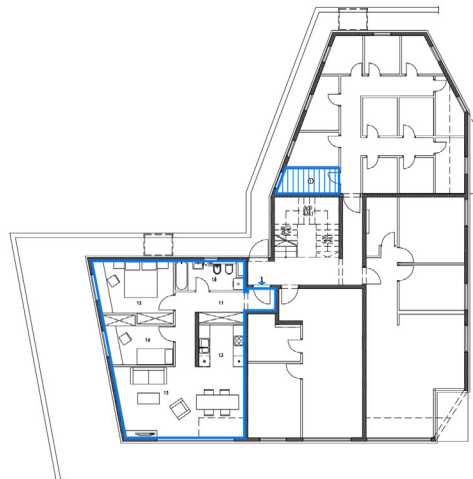
pripadci stana 1		
	151 16	vanjska parkirališna mjesta (2 x 2.30 x 5.00 m) 23.00 m ²
	OK S1	dio okućnice 143.27 m ²
UKUPNO PRIPADCI STANA 1: 170.77 m ²		
pripadci stana 2		
	1	vanjsko parkirališno mjesto (2.30 x 5.00 m) 11.50 m ²
	OK S2	dio okućnice 38.82 m ²
UKUPNO PRIPADCI STANA 2: 54.82 m ²		
pripadci stana 3		
	10 1 11	vanjska parkirališna mjesta (2 x 2.30 x 5.00 m) 23.00 m ²
	OK S3	dio okućnice 298.00 m ²
UKUPNO PRIPADCI STANA 3: 323.80 m ²		
pripadci stana 4		
	8 19	vanjska parkirališna mjesta (2 x 2.30 x 5.00 m) 23.00 m ²
UKUPNO PRIPADCI STANA 4: 27.00 m ²		
pripadci stana 5		
	2	vanjsko parkirališno mjesto (2.30 x 5.00 m) 11.50 m ²
UKUPNO PRIPADCI STANA 5: 15.80 m ²		
pripadci stana 6		
	17 1 18	vanjska parkirališna mjesta (2 x 2.30 x 5.00 m) 23.00 m ²
UKUPNO PRIPADCI STANA 6: 26.70 m ²		

5

pripadci stana 7		
	6 17	vanjska parkirališna mjesta (2 x 2.30 x 5.00 m) 23.00 m ²
UKUPNO PRIPADCI STANA 7: 27.20 m ²		
pripadci stana 8		
	13 1 14	vanjska parkirališna mjesta (2 x 2.30 x 5.00 m) 23.00 m ²
UKUPNO PRIPADCI STANA 8: 27.00 m ²		
pripadci stana 9		
	12	vanjsko parkirališno mjesto (2.30 x 5.00 m) 11.50 m ²
UKUPNO PRIPADCI STANA 9: 15.80 m ²		
pripadci stana 10		
	19, 20 1 24	vanjska parkirališna mjesta (3 x 2.30 x 5.00 m) 34.80 m ²
UKUPNO PRIPADCI STANA 10: 38.40 m ²		
pripadci stana 11		
	3, 4 1 5	vanjska parkirališna mjesta (3 x 2.30 x 5.00 m) 34.80 m ²
UKUPNO PRIPADCI STANA 11: 38.20 m ²		
pripadci stana 12		
	22, 23 1 24	vanjska parkirališna mjesta (3 x 2.30 x 5.00 m) 34.80 m ²
UKUPNO PRIPADCI STANA 12: 38.20 m ²		

Tlocrt stana br.1

Ground plan apartment No.1



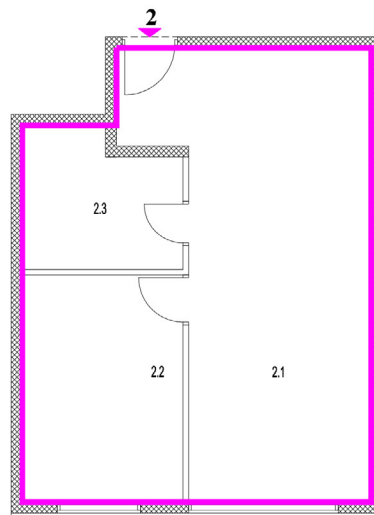
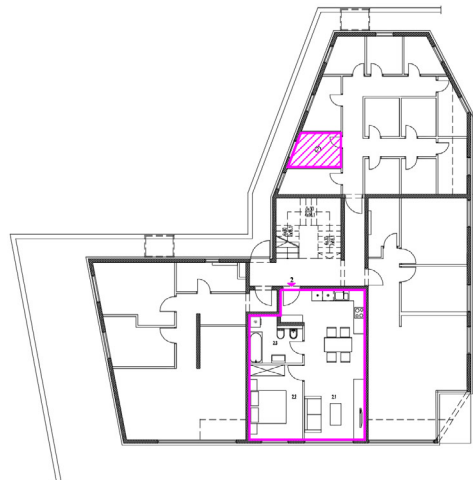
KAZALO:			
STAN 1 			
1.1	hodnik	KER. PLOČICE	11.00 m ²
1.2	kuhinja	KER. PLOČICE	5.70 m ²
1.3	dnevni boravak	KER.PL. / PARKET	26.90 m ²
1.4	soba 1	PARKET	7.70 m ²
1.5	soba 2	PARKET	13.20 m ²
1.6	kupaona	KER. PLOČICE	5.70 m ²
UKUPNO STAN 1:			70.20 m ²

pripadci stana 1			
	①	spremište 1	4.50 m ²
	15 i 16	vanjska parkirališna mjesta (2 x 2.30 x 5.00 m)	23.00 m ²
	OK S1	dio okućnice	143.27 m ²
UKUPNO PRIPADCI STANA 1:			170.77 m ²


SVEUKUPNO STAN 1 + PRIPADCI:	240.97 m ²
------------------------------	-----------------------

Tlocrt stana br.2

Ground plan apartment No.2




KAZALO:

STAN 2 

2.1	ulaz / kuhinja / d.b.	KER. PLOČICE	29.40 m ²
2.2	soba	PARKET	11.90 m ²
2.3	kupaona	KER. PLOČICE	6.70 m ²
UKUPNO STAN 2:			48.00 m ²

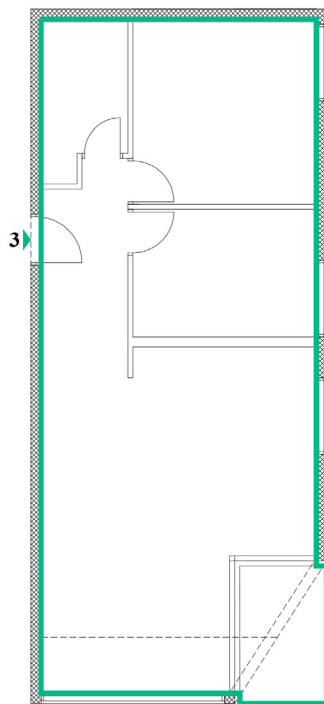
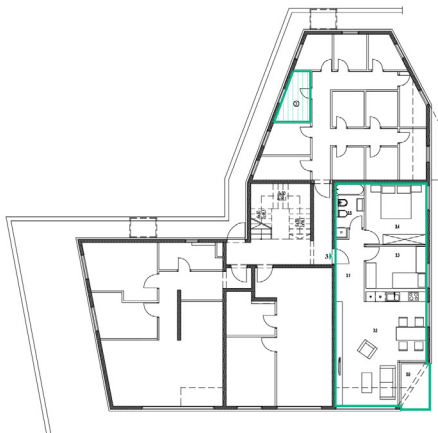
pripadci stana 2

	②	spremište 2	4.80 m ²
	1	vanjsko parkirališno mjesto (2.30 x 5.00 m)	11.50 m ²
	OK S2	dio okućnice	38.52 m ²
UKUPNO PRIPADCI STANA 2:			54.82 m ²


SVEUKUPNO STAN 2 + PRIPADCI: 102.82 m²

Tlocrt stana br.3

Ground plan apartment No.3






KAZALO:

STAN 3 

3.1	hodnik	KER. PLOČICE	6.80 m ²
3.2	kuhinja / blag. / d.b.	KER.PL. / PARKET	31.00 m ²
3.3	soba 1	PARKET	9.00 m ²
3.4	soba 2	PARKET	13.10 m ²
3.5	kupaona	KER. PLOČICE	4.90 m ²
UKUPNO:			64.80 m ²
3.6	terasa	KER. PLOČICE	5.00 m ²
UKUPNO STAN 3:			69.80 m ²

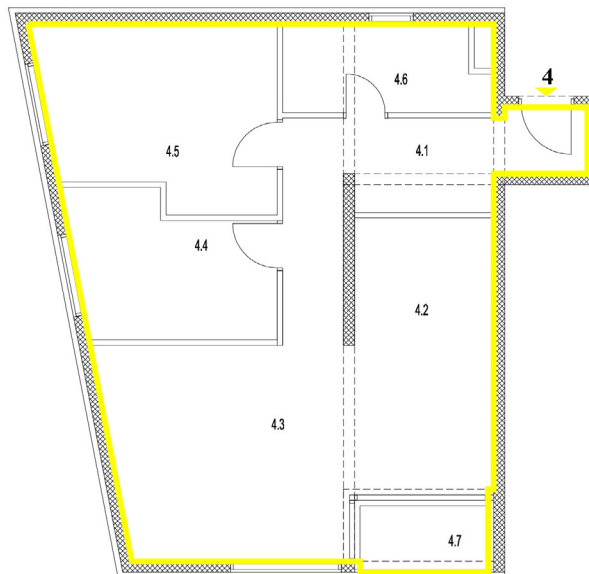
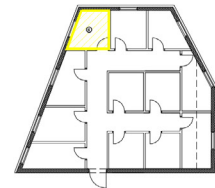
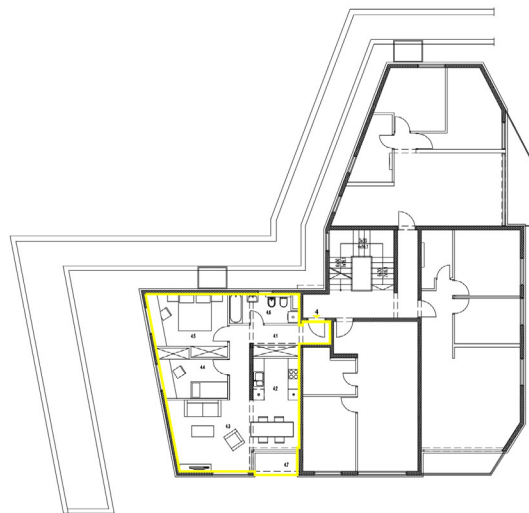
pripadci stana 3


	③	spremište 3	4.80 m ²
	10 i 11	vanjska parkirališna mjesta (2 x 2.30 x 5.00 m)	23.00 m ²
	OK S3	dio okućnice	296.00 m ²
UKUPNO PRIPADCI STANA 3:			323.80 m ²

SVEUKUPNO STAN 3 + PRIPADCI: 393.60 m²

Tlocrt stana br.4

Ground plan apartment No.4



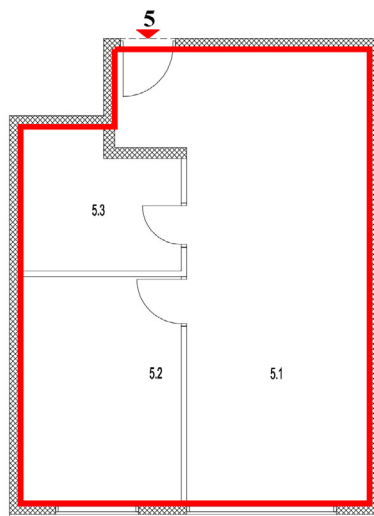
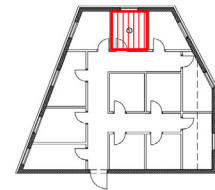
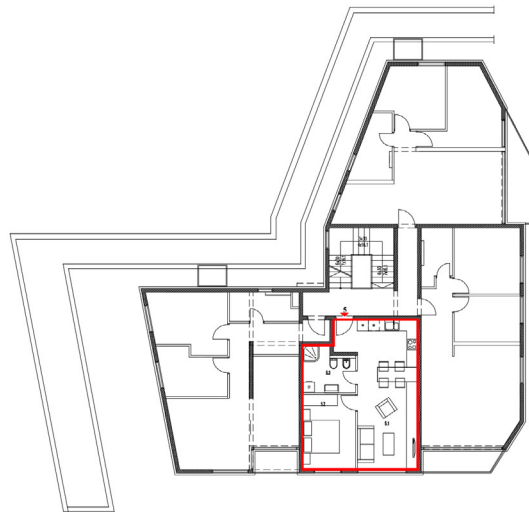
KAZALO:			
STAN 4 			
4.1	hodnik	KER. PLOČICE	11.00 m ²
4.2	kuhinja	KER. PLOČICE	5.80 m ²
4.3	dnevni boravak	PARKET	23.80 m ²
4.4	soba 1	PARKET	8.90 m ²
4.5	soba 2	PARKET	13.20 m ²
4.6	kupaona	KER. PLOČICE	5.70 m ²
UKUPNO:			64.80 m ²
4.7	loggia	KER. PLOČICE	2.60 m ²
UKUPNO STAN 4:			71.00 m ²

pripadci stana 4			
	④	spremište 4	4.00 m ²
	8 i 9	vanjska parkirališna mjesta (2 x 2.30 x 5.00 m)	23.00 m ²
UKUPNO PRIPADCI STANA 4:			27.00 m ²


SVEUKUPNO STAN 4 + PRIPADCI:	98.00 m ²
------------------------------	----------------------

Tlocrt stana br.5

Ground plan apartment No.5



KAZALO:

STAN 5 

5.1	kuhinja/blag./dn.bor.	KER. PLOČICE	29.30 m ²
5.2	soba	PARKET	11.90 m ²
5.3	kupaona	KER. PLOČICE	6.70 m ²
UKUPNO STAN 5:			47.90 m ²

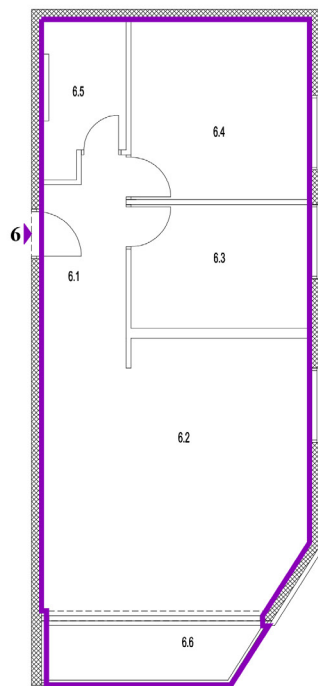
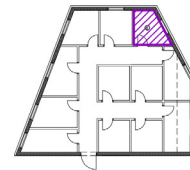
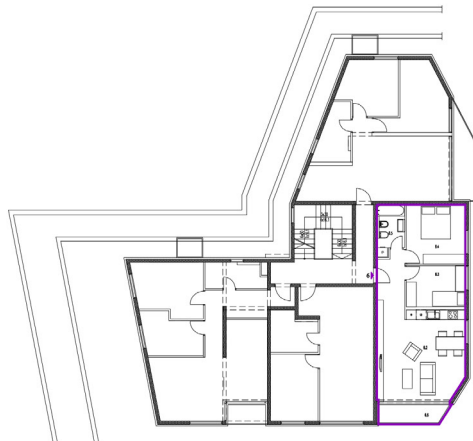
pripadci stana 5


	⊕	spremište 5	4.10 m ²
	2	vanjsko parkirališno mjesto (2.30 x 5.00 m)	11.50 m ²
UKUPNO PRIPADCI STANA 5:			15.60 m ²

SVEUKUPNO STAN 5 + PRIPADCI: 63.50 m²

Tlocrt stana br.6

Ground plan apartment No.6



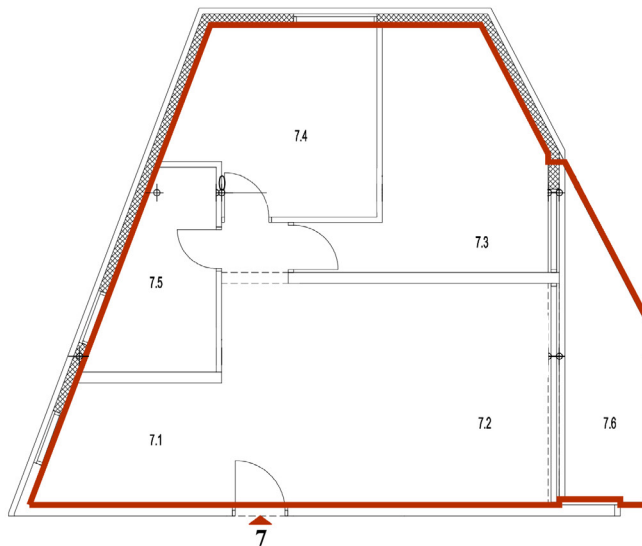
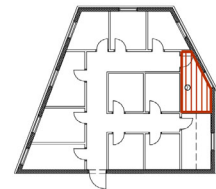
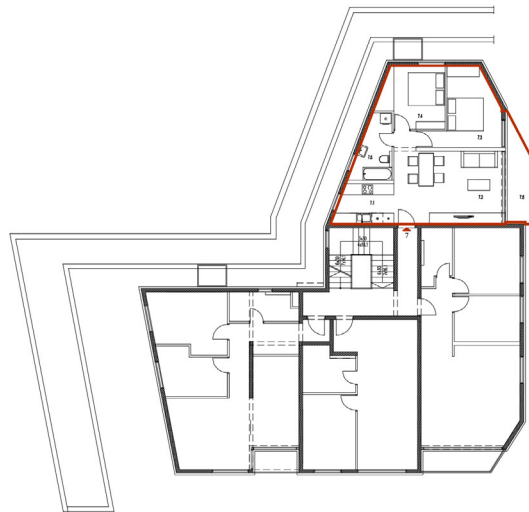
KAZALO:			
STAN 6 			
6.1	hodnik	KER. PLOČICE	6.80 m ²
6.2	kuhinja / blag. / d.b.	KER.PL. / PARKET	28.40 m ²
6.3	soba 1	PARKET	9.00 m ²
6.4	soba 2	PARKET	13.10 m ²
6.5	kupaona	KER. PLOČICE	4.90 m ²
UKUPNO:			62.20 m ²
6.6	terasa	KER. PLOČICE	4.70 m ²
UKUPNO STAN 6:			66.90 m ²

pripadci stana 6			
	⊕	spremište 6	3.70 m ²
	17 i 18	vanjska parkirališna mjesta (2 x 2.30 x 5.00 m)	23.00 m ²
UKUPNO PRIPADCI STANA 6:			26.70 m ²

SVEUKUPNO STAN 6 + PRIPADCI:	93.60 m ²
------------------------------	----------------------

Tlocrt stana br.7

Ground plan apartment No.7



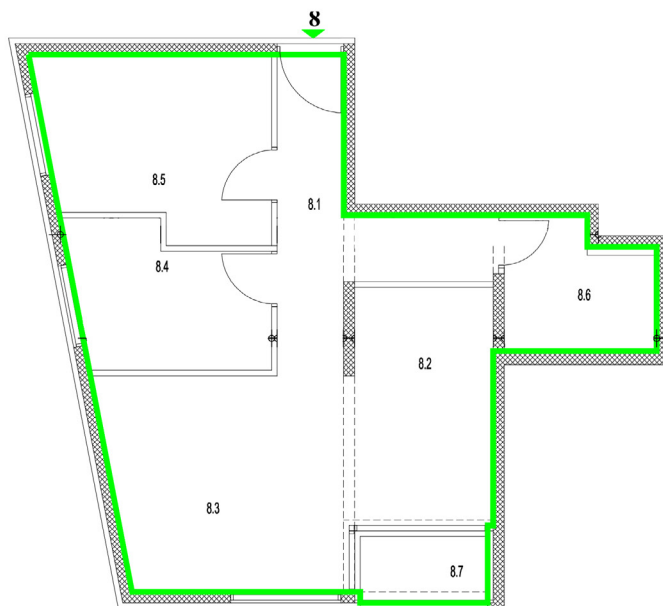
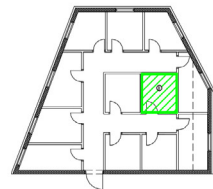
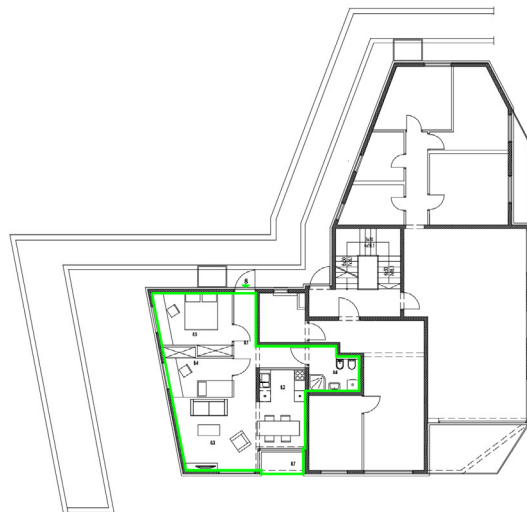
KAZALO:			
STAN 7 			
7.1	kuhinja	KER. PLOČICE	6.70 m ²
7.2	ulaz / blag. / d.b.	KER.PL. / PARKET	24.00 m ²
7.3	soba 1	PARKET	13.40 m ²
7.4	soba 2	PARKET	11.30 m ²
7.5	kupaona	KER. PLOČICE	6.50 m ²
UKUPNO:			61.90 m ²
7.6	terasa	KER. PLOČICE	6.70 m ²
UKUPNO STAN 7:			68.60 m ²

pripadci stana 7		
	⑦ spremište 7	4.20 m ²
	6 i 7 vanjska parkirališna mjesta (2 x 2.30 x 5.00 m)	23.00 m ²
UKUPNO PRIPADCI STANA 7:		27.20 m ²


SVEUKUPNO STAN 7 + PRIPADCI:	95.80 m ²
------------------------------	----------------------

Tlocrt stana br.8

Ground plan apartment No.8





KAZALO:

STAN 8 

8.1	hodnik	KER. PLOČICE	10.50 m ²
8.2	kuhinja/blagovaona	KER. PLOČICE	10.75 m ²
8.3	dnevni boravak	PARKET	17.00 m ²
8.4	soba 1	PARKET	8.60 m ²
8.5	soba 2	PARKET	12.85 m ²
8.6	kupaona	KER. PLOČICE	6.00 m ²
UKUPNO:			65.50 m ²
8.7	loggia	KER. PLOČICE	2.60 m ²
UKUPNO STAN 8:			68.10 m ²

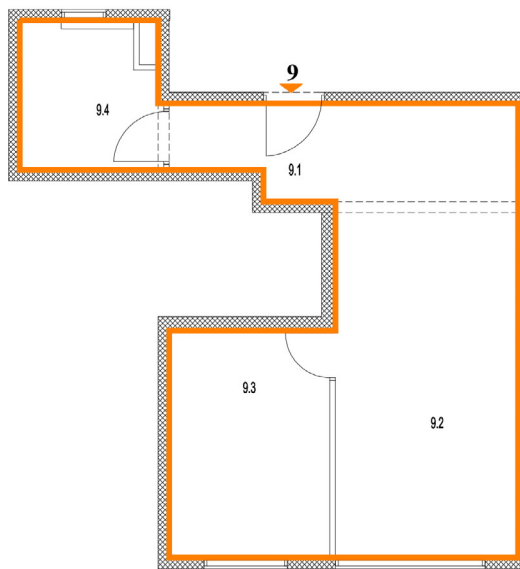
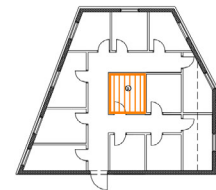
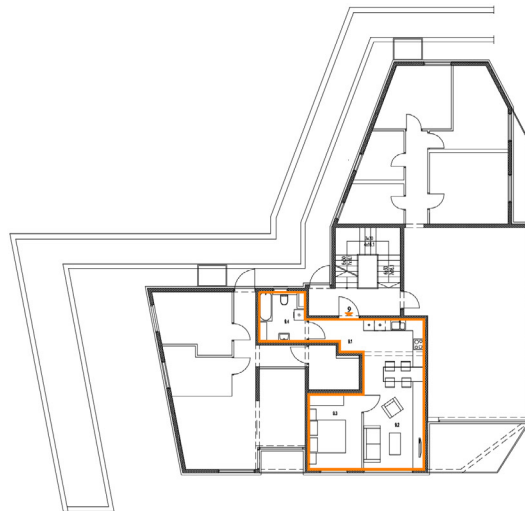
pripadci stana 8

	Ⓢ	spremište 8	4.00 m ²
	13 i 14	vanjska parkirališna mjesta (2 x 2.30 x 5.00 m)	23.00 m ²
UKUPNO PRIPADCI STANA 8:			27.00 m ²

SVEUKUPNO STAN 8 + PRIPADCI: 95.10 m²

Tlocrt stana br.9

Ground plan apartment No.9



KAZALO:

STAN 9

9.1	hodnik / kuhinja	KER. PLOČICE	10.90 m ²
9.2	dnevni boravak	KER. PLOČICE	20.60 m ²
9.3	soba	PARKET	11.90 m ²
9.4	kupaona	KER. PLOČICE	6.30 m ²
UKUPNO STAN 9:			49.90 m ²

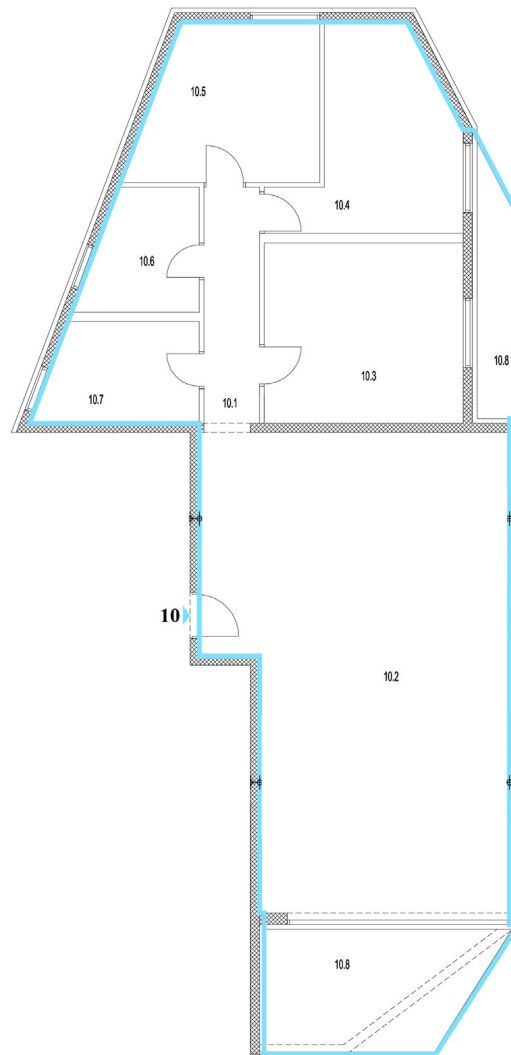
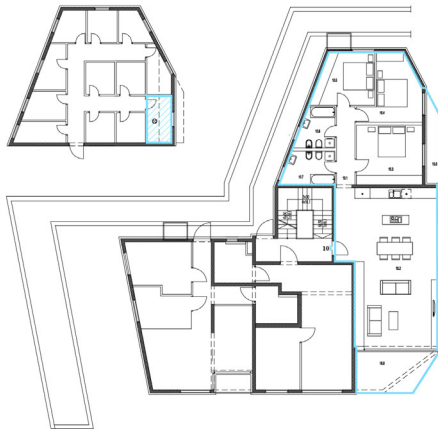
pripadci stana 9

	⑨	spremište 9	4.00 m ²
	12	vanjsko parkirališno mjesto (2.30 x 5.00 m)	11.50 m ²
UKUPNO PRIPADCI STANA 9:			15.50 m ²

SVEUKUPNO STAN 9 + PRIPADCI: 65.40 m²

Tlocrt stana br.10

Ground plan apartment No.10



KAZALO:

STAN 10

10.1	hodnik	KER. PLOČICE	6.10 m ²
10.2	ulaz / kuhinja / d.b.	KER.PL./PARKET	63.20 m ²
10.3	soba 1	PARKET	16.80 m ²
10.4	soba 2	PARKET	13.60 m ²
10.5	soba 3	PARKET	12.70 m ²
10.6	kupaona 1	KER. PLOČICE	6.10 m ²
10.7	kupaona 2	KER. PLOČICE	7.10 m ²
UKUPNO:			125.60 m ²
10.8	terasa 1	KER. PLOČICE	4.40 m ²
10.9	terasa 2	KER. PLOČICE	12.00 m ²
UKUPNO STAN 10:			142.00 m ²

prilanci stana 10

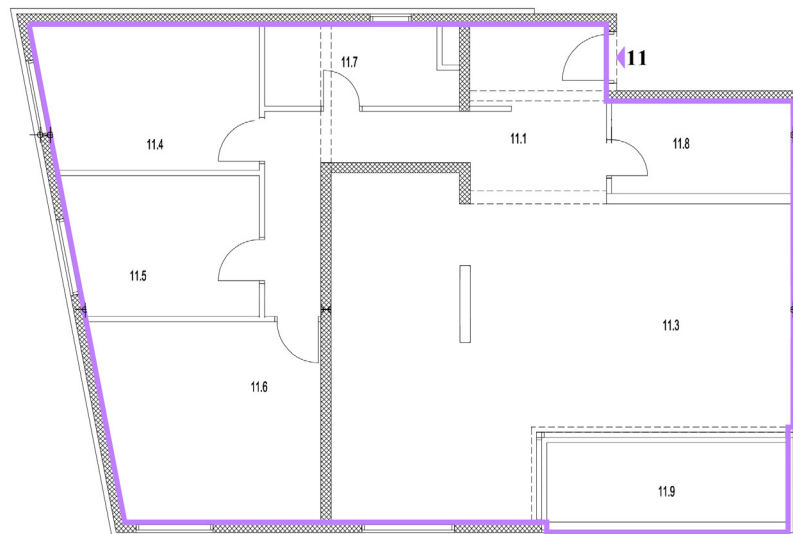
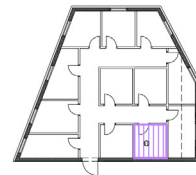
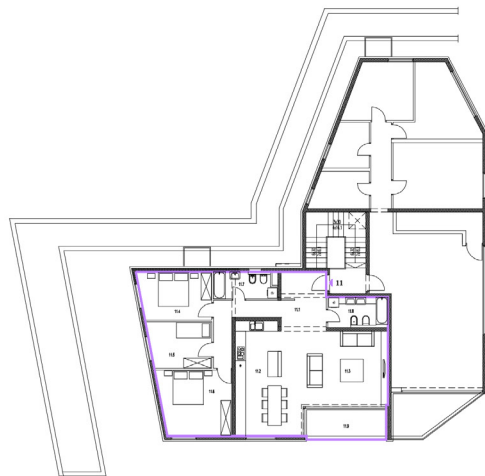
	19	spremište 10	4.90 m ²
	19,20 i 21	vanjska parkirališna mjesta (3 x 2.30 x 5.00 m)	34.50 m ²
UKUPNO PRIPADCI STANA 10:			39.40 m ²

SVEUKUPNO STAN 10 + PRIPADCI:

181.40 m²

Tlocrt stana br.11

Ground plan apartment No.11



KAZALO:			
STAN 11 			
11.1	hodnik	KER. PLOČICE	16.50 m ²
11.2	kuhinja	KER. PLOČICE	18.00 m ²
11.3	dnevni boravak	PARKET	30.20 m ²
11.4	soba 1	PARKET	12.00 m ²
11.5	soba 2	PARKET	10.10 m ²
11.6	soba 3	PARKET	16.40 m ²
11.7	kupaona 1	KER. PLOČICE	5.70 m ²
11.8	kupaona 2	KER. PLOČICE	6.40 m ²
UKUPNO:			115.30 m ²
11.9	Loggia	KER. PLOČICE	8.00 m ²
UKUPNO STAN 11:			123.30 m ²

pripadci stana 11			
	①	spremište 11	3.70 m ²
	3,4 i 5	vanjska parkirališna mjesta (3 x 2.30 x 5.00 m)	34.50 m ²
UKUPNO PRIPADCI STANA 11:			38.20 m ²

SVEUKUPNO STAN 11 + PRIPADCI:	161.50 m ²
-------------------------------	-----------------------

Tlocrt stana br.12

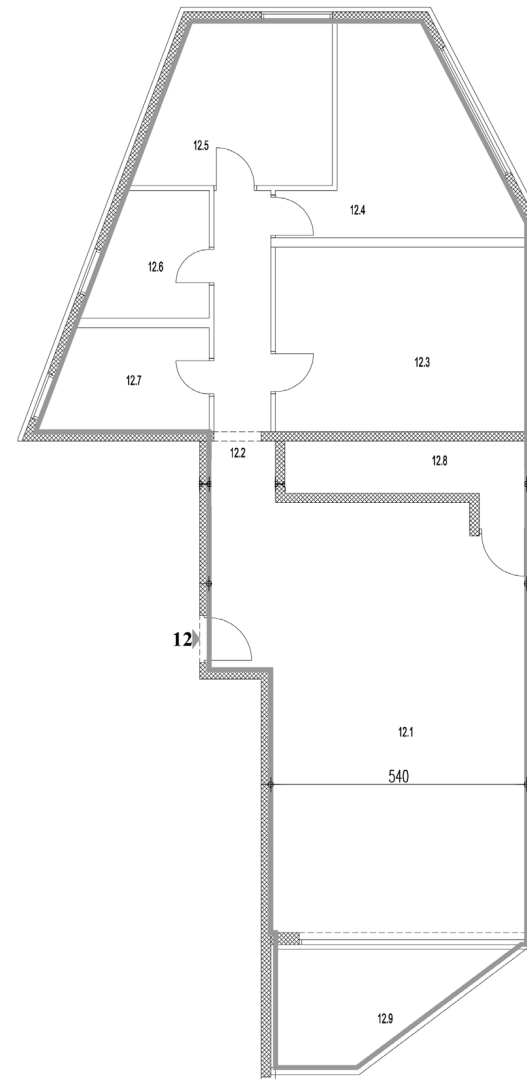
Ground plan apartment No.12



KAZALO:			
STAN 12			
12.1	kuhinja / blag. / d.b.	KER. PL. / PARKET	50.40 m ²
12.2	hodnik	KER. PLOČICE	11.20 m ²
12.3	soba 1	PARKET	20.70 m ²
12.4	soba 2	PARKET	14.90 m ²
12.5	soba 3	PARKET	12.70 m ²
12.6	kupaona 1	KER. PLOČICE	6.10 m ²
12.7	kupaona 2	KER. PLOČICE	7.10 m ²
12.8	ostava	KER. PLOČICE	6.40 m ²
UKUPNO:			129.50 m ²
12.9	terasa	KER. PLOČICE	9.40 m ²
UKUPNO STAN 12:			138.90 m ²

pripadci stana 12			
	10	spremište 10	3.70 m ²
	22,23 i 24	vanjska parkirališna mjesta (3 x 2.30 x 5.00 m)	34.50 m ²
UKUPNO PRIPADCI STANA 12:			38.20 m ²

SVEUKUPNO STAN 12 + PRIPADCI:	177.10 m ²
-------------------------------	-----------------------



One Building d.o.o.

OIB: 61243950104

Ulica hrvatskih branitelja 5, Kostrena
Mob/Viber/WhatsApp: +385 91 595 2861

number 
PROPERTIES